



GAT MONTHLY MEMBERSHIP PROGRESS REPORT

Results as of: 1/31/2023

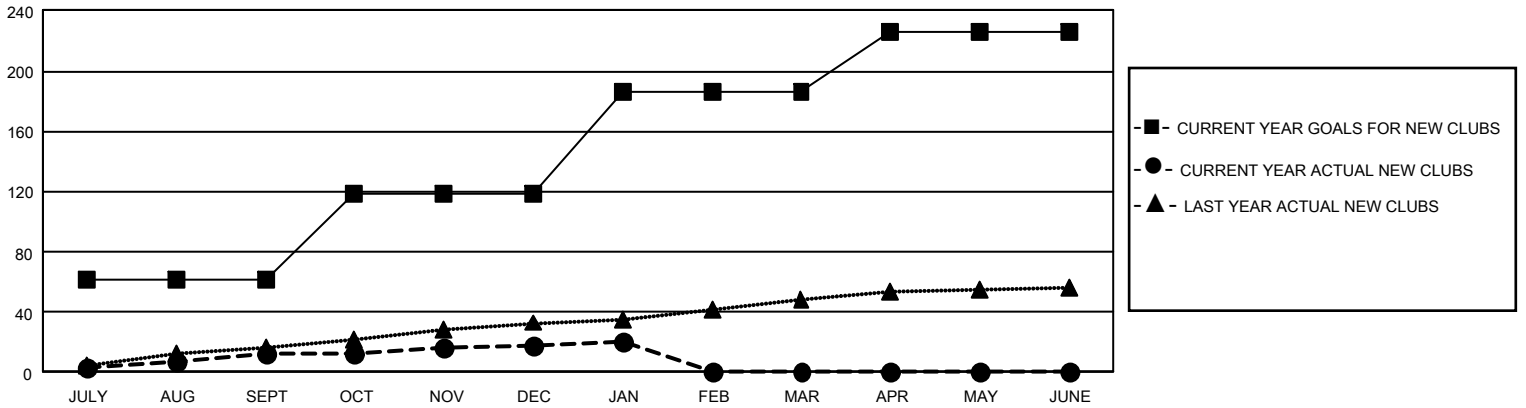
GAT Constitutional Area 5 - Korea

REPORT DOES NOT INCLUDE CLUBS IN UNDISTRICTED AREAS.

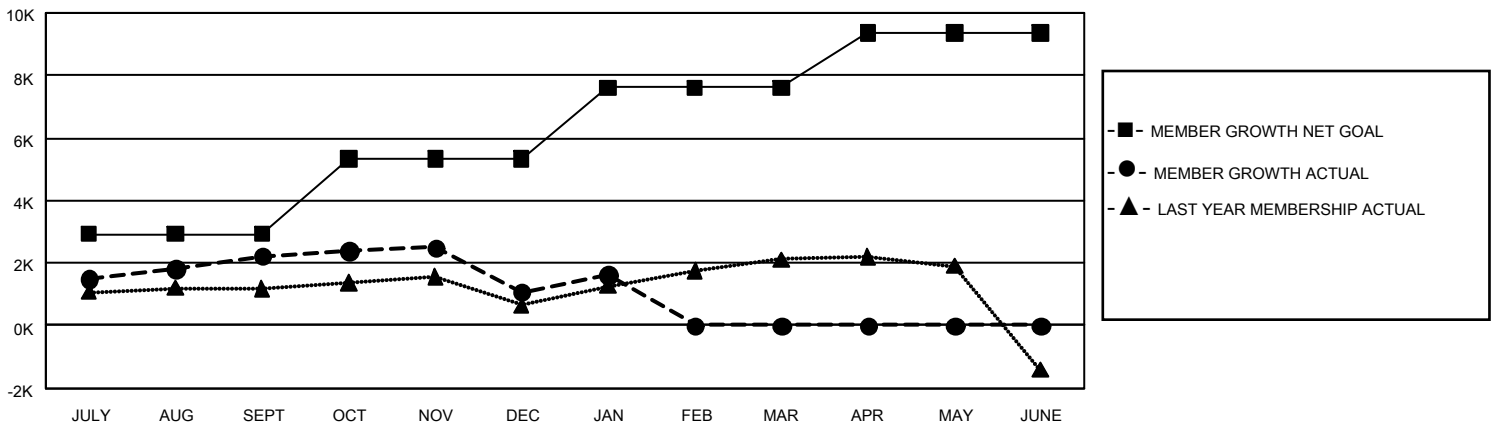
Clubs			
RESULTS FOR 2022-2023			
QUARTER	NEW CLUB GOAL	NEW CLUBS	DROPPED CLUBS
JULY/AUG/SEPT	183	12	12
OCT/NOV/DEC	174	6	16
JAN/FEB/MAR	201	2	1
APR/MAY/JUNE	120	0	0

Members			
RESULTS FOR 2022-2023			
QUARTER	MEMBER GROWTH NET GOAL	MEMBER GROWTH ACTUAL	DROPPED MEMBERS ACTUAL (including transfers)
JULY/AUG/SEPT	2925	4,708	2,305
OCT/NOV/DEC	2400	2,024	3,117
JAN/FEB/MAR	2293	1,047	454
APR/MAY/JUNE	1738	0	0

GOALS AND ACTUAL NEW CLUBS CUMULATIVE



GOALS AND ACTUAL MEMBERS CUMULATIVE



DROPPED CLUBS: 29	
DROPPED MEMBERS	
DECEASED	162
CLUB CANCELLED	361
OTHER	5,353
TOTAL	5,876

1,421 CLUBS OF 2,057 ADDED 1 OR MORE NEW MEMBERS

[CLICK HERE FOR CUMULATIVE MEMBERSHIP DATA](#)

GENDER DISTRIBUTION	
MALE	54,924 (74.49%)
FEMALE	18,805 (25.51%)
NON BINARY	0 (0.00%)
PREFER NOT TO ANSWER	0 (0.00%)
TOTAL FAMILY UNIT MEMBERS	4,705
FAMILY MEMBERS PAYING HALF DUES	2,719